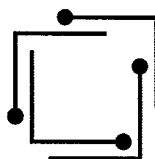




*Ministero delle Sviluppo Economico*



**RTR**

**Coordination Agreement  
between the Administrations of  
Italy and Austria  
regarding a new terrestrial  
frequency TV Plan in the band  
470 to 694 MHz**

The undersigned Administrations,

Agree on a specific TV channel distribution in the UHF band from 470 to 694 MHz along the common border, taking into account the topographical decoupling of the mountains.

**Background:** The decision of the EU Parliament and the Council (**Decision 2017/899/EU**) requires the clearance of the 700 MHz band from broadcasting services in the EU. At the end of 2017 the coordination negotiations with the neighbouring countries have to be finished. Latest on 30<sup>th</sup> June of 2018 the Member States of the European Union have to publish their national roadmap how to provide the 700 MHz band for mobile broadband services.

Considering that without the 700 MHz band 28 TV channels from 21 to 48 will remain, which shall be distributed in an equal manner between both Administrations.

Considering that the mountains between Austria and Italy have a strong decoupling effect, which can be used for efficient frequency planning.

Considering that a coordination zone includes transmitter sites, who may affect the populated regions of the coverage areas of the neighbouring country.

Considering that the transmitter sites outside the coordination zones have no influence into the populated regions of the coverage areas of the neighbouring country.

Considering that the effective coverage area of the specific transmitter sites are not high altitude areas of the mountains.

Considering that a limited number of transmitter sites belong to the coordination zones, which have influence regarding potential interference to the territory of the neighbouring country.

Considering that, according to GE06 Plan, there are 4 individual coordination zones between Austria and Italy. These Zones are:

**Zone A:** Alto Adige west / North Tyrol west

**Zone B:** Alto Adige middle / North Tyrol middle

**Zone C:** Alto Adige east / East Tyrol

**Zone D:** Udine nord / Carinthia west

*Undertake* with respect to facilitate the evolvement of terrestrial TV in the band 470 to 694 MHz and taking into account, that on the basis of the existing transmitters on both sides of the border at the time, when this agreement was set up, these four different coordination zones are limited to the coverage area of the transmitters reported in the ANNEX 2:

1. Divide the available 28 TV channels (ch.21 to ch.48) in the limited coordination zones in an equal manner: 14 channels are assigned to the Italian part of the coordination zone and 14 channels are assigned to the Austrian part of the coordination zone. The distribution of the specific channels can be seen in the table in ANNEX 1. The results are based on the existing transmitters using the calculation method in paragraph 5. In the Italian limited zone D (Tarvisio) the use of the channels 28, 29 and 34 was assented by Slovenia with the communication of 23 October 2017 and by Croatia with the communication of 15 novembre 2017.
2. The existing transmitters in ANNEX 2 (the parameters were exchanged during the preparation of the agreement) are assigned to the respective coordination zone.
3. The existing transmitters which are outside the limited coordination zone, but inside the GE06 Plan coordination zone, when the agreement was set up, are listed in ANNEX 3 of the agreement. The assessment of paragraph 5 was used to evaluate if a transmitter is not part of the limited coordination zone.
4. New transmitters on new transmitter sites, which might be made accessible in the future, after the agreement is in force, will be assessed, if they are part of the limited coordination zone or not.
5. If the propagation calculation shows interfering field strength, which is higher than  $40,0 \text{ dB}\mu\text{V/m}$  in 10 m height in the coverage area of the neighbouring country, than the new site is normally part of the respective coordination zone. In special cases, more details like  $C/N$ , antenna discrimination, polarisation discrimination and measurement results can be taken into account, when assessing if the transmitter is part of the coordination zone or not.
6. If the operation of stations, although made in accordance with paragraph 4 of this Agreement, results in unacceptable interference to the other Administration, the Administration, which brought the station causing interference into operation, shall in cooperation with the affected Administration and take the necessary action to eliminate the interference.

### **Calculation method**

The field strength prediction model to be used to calculate the field strength can be ITU-R P.1812 time probability between 1% and up to 10% of time, or ITU-R P.526-12 or other prediction models, which take into account the terrain profile between transmitter and receiver.

### **Protected Coverage area**

The coverage area, which has to be protected, is the area where the audience is living (populated areas).

### **Transition period and switch over from the existing channels to the new channels**

The implementation of the agreed frequency channel distribution plan in the four zones (**A,B,C,D**) will be done step by step in the transition period, which will start when the agreement is signed. Both Administrations will contribute in the timely framework, as specified in the European Parliament and Council decision on the UHF band, with their best effort to implement the new agreed channels in the four coordination zones in a modality that a smooth transition with the least possible adverse effects for the audience can be carried out.

### **Review of the Agreement**

With the consent of the other Administration, this Agreement may be modified at the request of one of the signatory Administration where such a modification becomes necessary in the light of administrative, regulatory or technical developments. An Administration cannot withdraw unilaterally from this Agreement.

### **Language of the Agreement**

This Agreement exists in two original versions in English. Each Administration has one of the versions.

### **Entry into force**

This Agreement will enter into force upon the signature of two parties.

For the Administration of **Austria**

Date: 1/12/2017

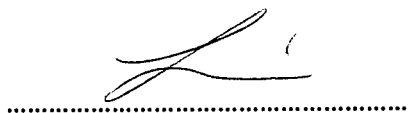


Peter Reindl

Austrian Regulatory Authority for  
Broadcasting

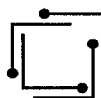
For the Administration of **Italy**

Date: 1.12.2017



Eva Spina

Ministry of Economic Development



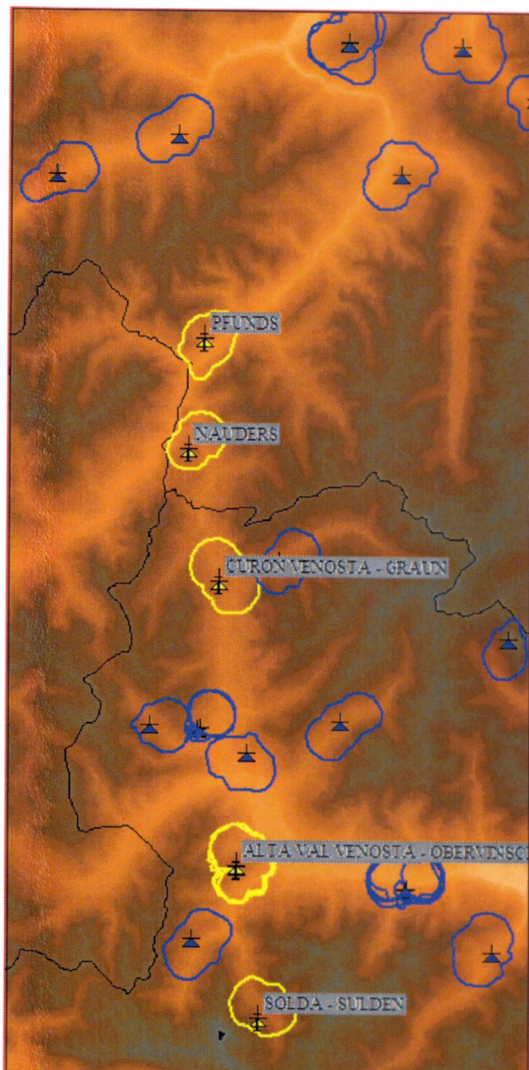
## ANNEX 1

ZONE A		ZONE B		ZONE C		ZONE D	
AUT	I Bolzano West	AUT	I Bolzano Ovest	AUT	I Bolzano Ovest	AUT	I Udine Nord
	21		21		21		
22		22			22		
23		23			23	23	
24		24		24		24	
	25		25	25			25
	26		26		26		26
27		27		27			
	28		28	28		28	28
	29		29		29		29
	30		30		30	30	
	31		31		31	31	
32		32		32			32
33		33		33		33	
	34		34		34	34	34
	35	35		35		35	
36		36		36			36
37		37		37			37
	38		38		38		38
39		39		39		39	
	40		40		40		40
41		41		41		41	
42			42		42		42
43		43		43		43	
44		44		44			44
	45		45		45	45	
	46		46		46	46	46
47		47		47			47
	48		48		48	48	

The co-channel usage in Zone D (ch. 28, 34, 46) means that according to detailed assessments the transmitters in Tarvisio in Italy can share the same channels on the transmitter site WOLFSBERG 1 (ch 28, 46) and BLEIBURG 2 (ch 34) in Austria.

## ANNEX 2

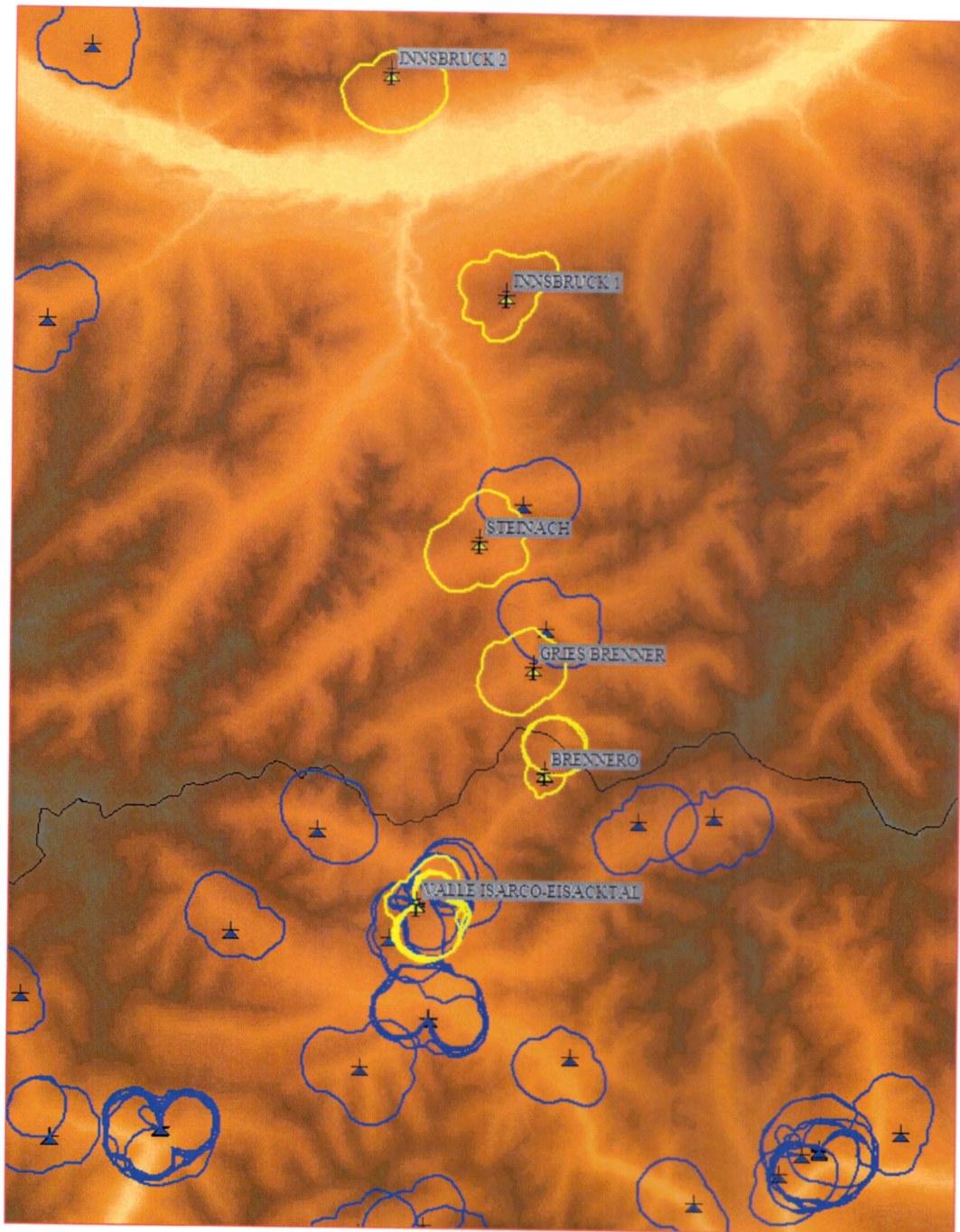
### Coordination Zone A:



Transmitter name	Pol.	Height	ERP in dBW	Adm.	In Zone	Coordination
PFUNDS	H	1490	24,0	AUT	ZA	
NAUDERS	H	1780	13,0	AUT	ZA	
ALTA VAL VENOSTA	H	1963	20,0	I	ZA	
ALTA VAL VENOSTA - OBERVINSCHGA	H	1965	28,0	I	ZA	
CURON VENOSTA - GRAUN	H	1515	17,0	I	ZA	
SOLDA - SULDEN	H	2325	13,0	I	ZA	



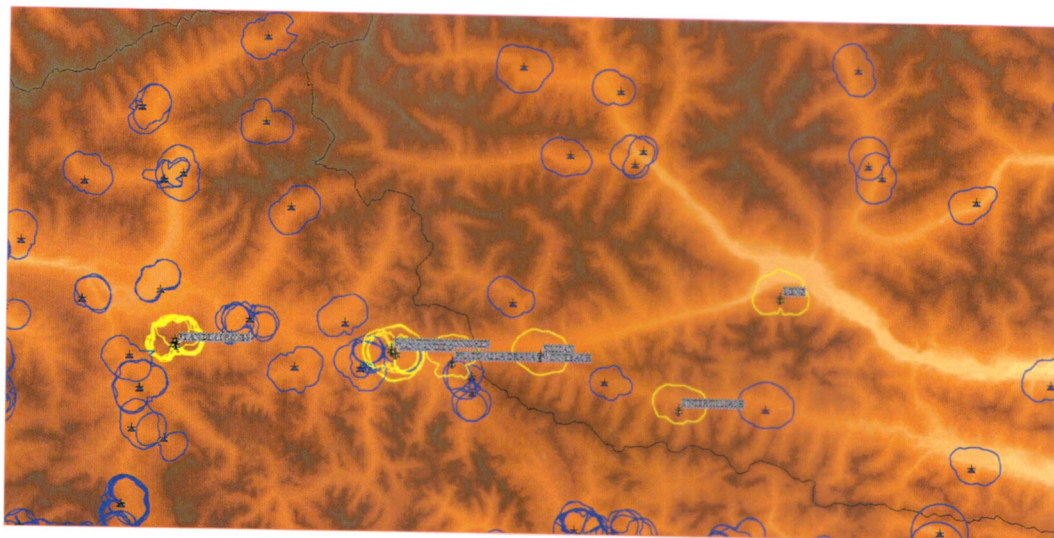
**Coordination Zone B:**



Transmitter name	Pol.	Height	ERP in dBW	Adm.	In Coordination Zone
GRIES BRENNER	H	1430	19,0	AUT	ZB
STEINACH	V	1370	20,0	AUT	ZB
INNSBRUCK 1	H	2246	48,0	AUT	ZB
INNSBRUCK 2	V	1905	30,0	AUT	ZB
BRENNERO	H	1375	10,0	I	ZB
VIPITENO VALLE ISARCO	H	1877	11,0	I	ZB
VALLE ISARCO-EISACKTAL	H	1885	24,0	I	ZB



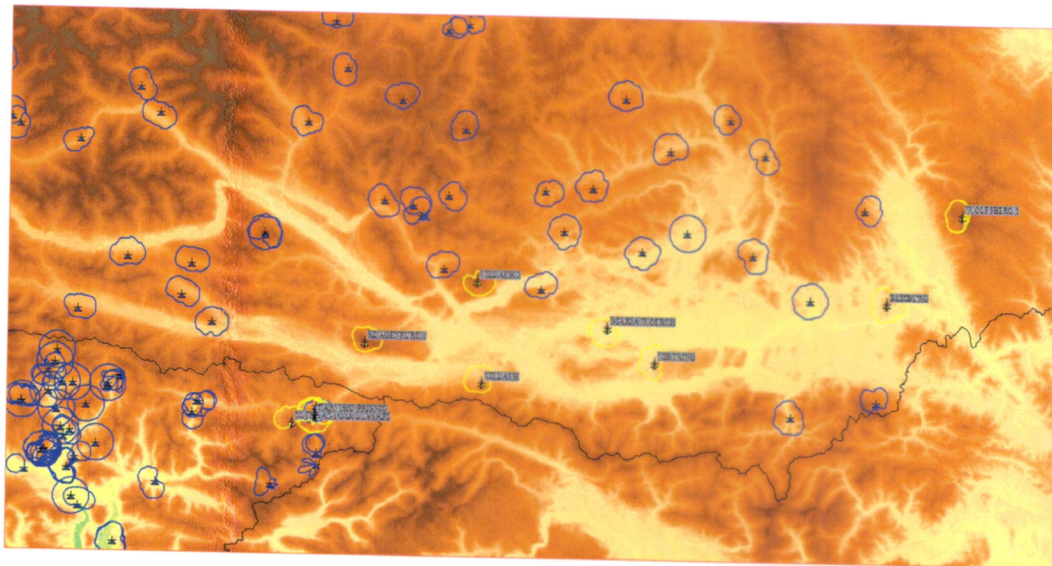
## Coordination Zone C:



Transmitter name	Pol.	Height	ERP in dBW	Adm.	In Coordination Zone
SAN CANDIDO-INNICHEN	H	1690	24,0	I	ZC
PLAN CORONES	H	2258	27,0	I	ZC
PRATO ALLA DRAVA - WINNEBACH	V	1263	15,0	I	ZC
PLAN DE CORONES	H	2258	21,0	I	ZC
S.CANDIDO	H	1688	29,0	I	ZC
SAN CANDIDO	H	1440	14,0	I	ZC
LIENZ	V	1905	33,3	AUT	ZC
UNTERTILLIACH	H	1561	17,0	AUT	ZC
SILLIAN	H	1316	26,0	AUT	ZC



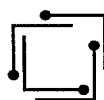
Coordination Zone D:



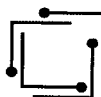
Transmitter name	Pol.	Height	ERP in dBW	Adm.	In Coordination Zone
TARVISIO PRISNIG	H	1299	7,0	I	ZD
TARVISIO	H	1310	15,0	I	ZD
M.TE SANTO DI LUSSARI	H	1750	12,0	I	ZD
MONTE PRISNIG	H	1280	11,0	I	ZD
KLAGENFURT 1	H	2115	38,0	AUT	ZD
WOLFSBERG 1	H	2057	30,0	AUT	ZD
VIKTRING	H	715	41,6	AUT	ZD
VILLACH 3	H	1903	27,0	AUT	ZD
MARIA WOERTH	H	540	20,0	AUT	ZD
BLEIBURG	H	870	25,0	AUT	ZD
VILLACH	H	928	38,5	AUT	ZD

ANNEX 3

Transmitter name	Pol.	Height	ERP in dBW	Adm.
IMST 1	H	1050	23,0	AUT
S LEONHARD PZT	H	1500	19,5	AUT
PRUTZ	H	1614	27,0	AUT
PAZNAUN 2	V	1392	27,0	AUT
PAZNAUN 1	H	1096	13,0	AUT
IMST 2	H	820	20,5	AUT
WENNS	H	1330	18,0	AUT
IMST 4	V	1490	28,0	AUT
LANDECK 1	H	2208	36,0	AUT
TARNELLO SAN LAZZARO	H	1220	16,0	I
LASA	H	1275	14,0	I
MALLES VENOSTA-MALS	H	1140	20,0	I
MAZIA - MATSCH	V	1775	14,0	I
MASO CORTO - KURZRAS	H	3190	13,0	I
MARTELLO - MARTELL	H	1220	13,0	I
SLINGIA - SCHLINIG	H	1860	17,0	I
VALLELUNGA - LANGTAUFERS	H	1730	16,0	I
PLANOL	H	1645	22,0	I
LASA-LAAS	H	1211	23,0	I
TRAFOI	H	2090	10,0	I
SEEFELD TIROL	H	1493	27,0	AUT
GRIES SELLRAIN	H	1270	13,0	AUT
S JODOK	M	1550	18,8	AUT
NAVIS	H	1401	16,5	AUT
VIDEOBOLZANO	M	1280	19,0	I
GRUPPERHJOCH OLMEDO	H	1220	12,0	I
HOLZER SERGESSTRASSE	M	1130	15,1	I
SAN LEONARDO PASSIRIA	H	1270	12,0	I
LASTE	H	1510	10,0	I
GIOVO VAL DI MEZZO-JAUHEN-MITTE	V	1210	10,0	I
SASSO - STEIN	H	1518	13,0	I
COLLE ISARCO	H	1495	8,0	I
MOSO IN PASSIRIA	H	1460	17,0	I
FLANES-FLANS	V	1303	13,0	I
M.CAVALLO-ROSSKOPF	H	1843	16,0	I
MARANZA	V	1301	13,0	I
CAMPO DI TRENS	H	1352	16,0	I
SAN LEONARDO IN PASSIRIA	H	1280	16,0	I
CAMINATA - KEMATEN	V	1808	21,0	I
CORVARA IN PASSIRIA - RABENSTEI	V	1900	14,0	I
FORTEZZA - FRANZENSFESTE	M	775	22,0	I

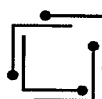


RIDANNA - RIDNAUN	H	1453	14,0	I
MOSO IN PASSIRIA - MOOS IN PASS	H	1478	13,0	I
CAMPO DI TRENS-FREIENFELD	H	1350	23,0	I
MARANZA-MERANSEN	V	1370	27,0	I
COLLE ISARCO-GOSSENSASS	H	1463	17,0	I
VALLARGA-WEITENTAL	H	1415	17,0	I
PENNES CIMA CAPRA	V	2556	17,0	I
S. GIOVANNI SARENTINO - ST. JOH	H	1566	10,0	I
FLERES - PFLERSCH	V	1405	13,0	I
FLANES - FLANS	V	1303	13,0	I
SAN LEONARDO IN PASS.-SAINT LEO	H	1286	22,0	I
MONTE CAVALLO	H	1850	13,0	I
DANTA	H	1461	12,0	I
M.SIERA	H	1590	16,0	I
COL DAVARA	H	1037	9,0	I
COSTALISSOIO	H	1300	11,0	I
SIERRA	H	1619	8,0	I
DANTA DI CADORE	H	1336	20,0	I
SAPPADA	H	1521	11,0	I
S.STEFANO DI CADORE	H	940	15,0	I
PRESENAIO	H	1030	15,0	I
SELVA DEI MOLINI-MUEHLWALD	H	1510	15,0	I
LA VALLE-WENGEN	H	1412	13,0	I
MAREBBE-ENNEBERG	H	1615	19,0	I
PREDOI-PRETTAU	H	1831	14,0	I
LUTAGO-LUTTACH	H	1415	22,0	I
MONGUELFO-WELSBERG	H	1287	20,0	I
SELVA VAL GARDENA-WOLKENSTEIN	H	1755	15,0	I
VALDAORA-OLANG	H	1130	22,0	I
VALLARGA-WEITENTAL	H	1415	17,0	I
SESTO - SEXTEN	H	1643	13,0	I
DOBBIACO-TOBLACH	H	1328	17,0	I
BADIA-ABTEI	V	1702	17,0	I
CAMPO TURES-SAND IN TAUERS	M	1141	15,6	I
PASSO GARDENA - GROEDNERJOCH	H	2280	15,0	I
VALLE DI BRAIES - PRAGSERTAL	H	1433	10,0	I
ANTERSELVA DI MEZZO - ANTHOLZ M	H	1339	13,0	I
RINA IN BADIA - WELSCELLEN	H	1470	13,0	I
VALLE DI CASIES - GSIESERTAL	H	1380	17,0	I
S. LORENZO - ST. LORENZEN	M	1572	25,1	I
ACERETO - AHORNACH	M	1309	18,0	I
BADIA	V	1670	10,0	I
SELVA DI VAL GARDENA	H	1734	15,0	I
COL ALTO	V	1933	27,0	I

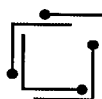


BADIA-SPONATA	V	1673	15,0	I
DOBBIACO	H	1209	21,0	I
MONGUELFO	H	1323	14,0	I
SESTO-SEXTEN	H	1643	13,0	I
M.TE ELMO	H	2050	19,0	I
PASSO GARDENA	H	2280	7,0	I
SELVA GARDENA	H	1740	8,0	I
COLFOSCO	M	1667	7,0	I
COLFOSCO - CORVARA	M	1677	7,0	I
SESTO	H	1630	21,0	I
BRUNICO	H	1000	24,0	I
BADIA LOC	V	1702	10,0	I
MAREBBE	H	1615	7,0	I
RIVA DI TURES	H	1735	9,0	I
TOLPEIT	H	1560	9,0	I
ACERETO	H	1340	15,0	I
SELVA DI VAL GARDENA RAS	H	1755	10,0	I
S.LORENZO	M	1570	20,1	I
VALDAORA	H	1125	6,0	I
CORVARA IN BADIA	H	1620	11,0	I
RIGOLATO	H	867	13,0	I
M.TE TENCHIA	H	1660	1,0	I
S.STEFANO	H	923	10,0	I
SIERA	H	1726	20,0	I
SANTA BARBARA	H	1440	19,0	I
SARES RIENZA	H	1250	15,0	I
COSTA NOSELLARI MASO STOLZEN	H	1446	15,0	I
MONTE ELMO	H	2060	13,0	I
LUTAGO	M	1415	19,0	I
TIMAU VIA GELTRUDE	H	870	13,0	I
CLEULIS PIAZZA DELLA VITTORIA	H	905	12,0	I
MONTE TENCHIA	M	1668	17,0	I
STALL	V	1000	30,0	AUT
HOPFGARTEN DEF	V	1570	23,0	AUT
S LORENZEN LES	H	1350	17,0	AUT
MOERTSCHACH 1	H	1090	23,0	AUT
KOETSCHACH	H	904	25,0	AUT
HEILIGENBLUT	V	1540	24,0	AUT
GREIFENBURG	H	996	31,0	AUT
OBERPEISCHLACH	H	916	19,0	AUT
PRAEGRATEN	V	1530	17,0	AUT
MOERTSCHACH 2	V	1258	20,0	AUT
VILLGRATEN 3	V	1638	23,0	AUT
OBERTILLIACH	H	1593	23,0	AUT





MATREI OSTTIROL	H	1395	27,0	AUT
HUBEN 1	H	1291	27,0	AUT
RIO PAULARO	H	700	16,0	I
PONTEBBA	H	680	11,0	I
TOLMEZZO	H	1218	9,0	I
M.TE TENCHIA	H	1660	1,0	I
FORNEASO	V	507	6,0	I
PAULARO	H	1275	13,0	I
CAVE DEL PREDIL 2	H	923	10,0	I
PONTEBBA BASSA	M	587	8,0	I
LAGO DEL PREDIL	H	1090	22,0	I
ILLEGIO	H	554	16,0	I
CERCIVENTO	H	650	16,0	I
CAVE DEL PREDIL	H	920	16,0	I
TIMAU VIA GELTRUDE	H	870	13,0	I
SAN PIETRO IN CARNIA	H	749	8,0	I
CASERA VALDEMAN ALTA	H	1566	25,0	I
VIA PACIFICO VALUSSI	V	1070	12,0	I
MONTE CABIA	V	753	10,0	I
RIO PRABON C	H	1251	11,0	I
LOVEA	V	614	11,0	I
CLEULIS PIAZZA DELLA VITTORIA	H	905	12,0	I
ALZERI	H	605	12,0	I
SCAIOLE	H	617	11,0	I
TREPPA CARNICO-VIA 4 NOVEMBRE	H	660	11,0	I
MONTE DIVERDALCE	H	1218	19,0	I
VIA ROMA	H	600	12,0	I
MONTE TENCHIA	M	1668	17,0	I
DIVERDALCE	M	1215	19,0	I
MONTE DIVERDALCE TOLMEZZO	M	1210	20,0	I
SPITTAL DRAU 1	H	2132	35,0	AUT
BLEIBURG 2	H	1710	23,0	AUT
B KLEINKIRCHHEIM 2	H	1760	11,8	AUT
STALL	V	1000	30,0	AUT
VOELKERMARKT	V	585	20,0	AUT
INNERKREMS	H	2090	17,0	AUT
WEISSBRIACH	H	950	20,0	AUT
TECHENDORF	H	932	17,0	AUT
RENNWEG	H	1502	26,0	AUT
OBERVELLACH	H	1110	27,0	AUT
MALLNITZ 1	V	1253	20,0	AUT
KOETSCHACH	H	904	25,0	AUT
HERMAGOR	H	1010	25,0	AUT
GREIFENBURG	H	996	31,0	AUT



GMUEND KTN 1	H	1150	26,0	AUT
B KLEINKIRCHHM	H	1350	20,0	AUT
ARRIACH	H	1142	20,0	AUT
STRASSBURG PIR	H	838	20,0	AUT
FELDKIRCHEN KT	H	940	27,0	AUT
EISENKAPPEL 1	H	850	20,0	AUT
ST VEIT	V	476	22,0	AUT
WEITENSFELD	H	1171	26,5	AUT
TURRACH	V	2040	15,5	AUT
STEUERBERG	V	1090	27,0	AUT
SIRNITZ	H	980	17,0	AUT
PATERGASSEN	H	1220	26,0	AUT
METNITZ	H	1450	20,0	AUT
GUTTARING	H	900	20,0	AUT
FRIESACH	H	1220	27,0	AUT
WOLFSBERG 2	H	980	23,0	AUT
RADENTHEIN 1	V	1167	19,5	AUT
BRUECKL	H	942	29,0	AUT
LIEBENFELS	H	668	13,0	AUT

*L*

*C*